



Castles

WIVELSFIELD
Eaton Bray, LU6 2JQ

WIVELSFIELD

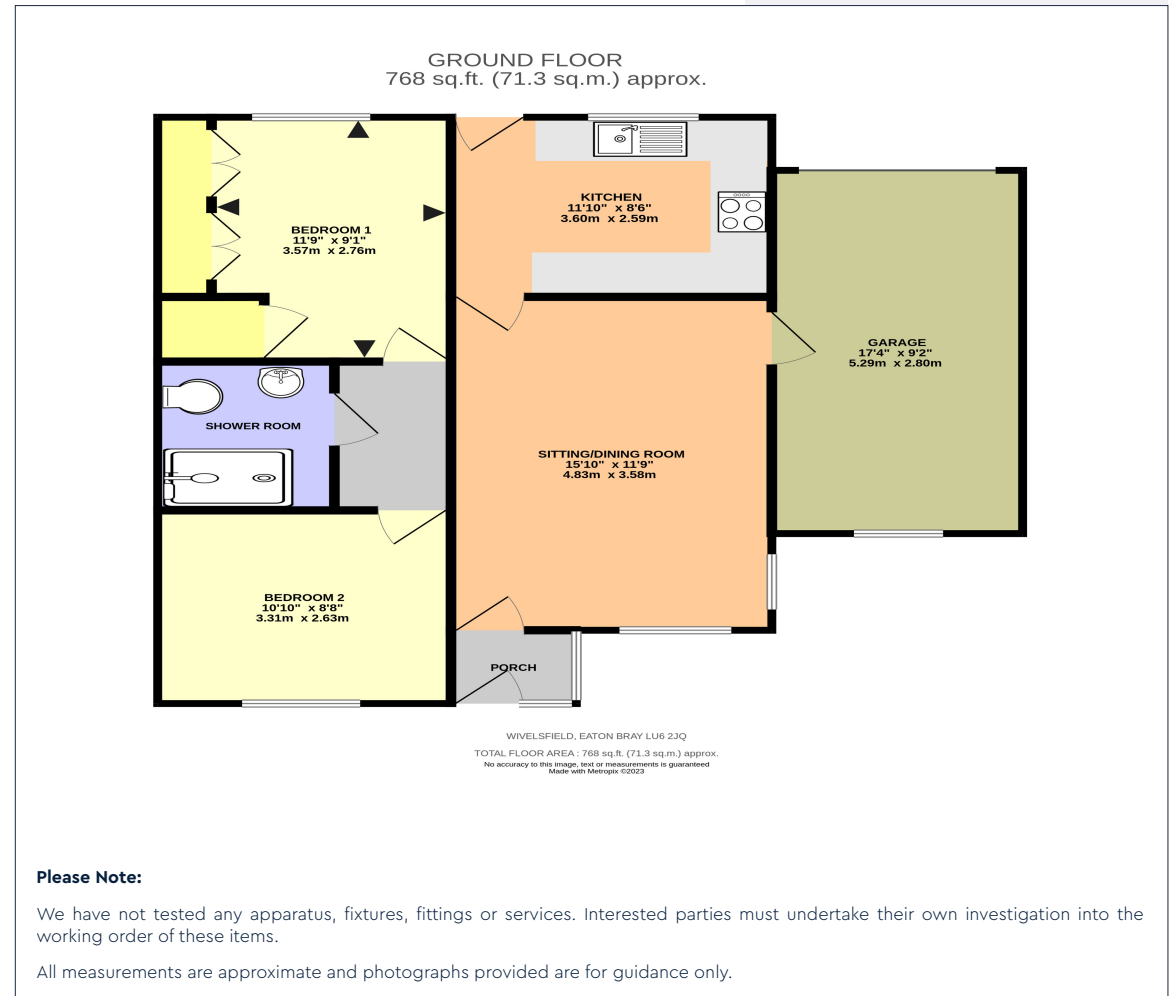
Eaton Bray, LU6 2JQ

£365,000
(Freehold)



Offered with no upper chain and requiring some updating, this 2 bedroom, semi detached bungalow sits on a corner plot. The accommodation comprises of 2 good sized bedrooms, a bathroom, lounge and kitchen. The garden is low maintenance with a gate offering access to the side of the property. The garage is positioned to the side of the property and is accessible via the main garage door or through a door situated in the lounge and offers scope to convert.

Tenure: Freehold
Council Tax Band: D
EPC Rating: D



Berkhamsted Office: 148 High Street, Berkhamsted, Hertfordshire HP4 3AT **Tel: 01442 865252**
Boxmoor Office: 33 St John's Road, Hemel Hempstead, Hertfordshire HP1 1QQ **Tel: 01442 233345**
Eaton Bray Office: 2a Wallace Drive, Eaton Bray, Dunstable LU6 2DF **Tel: 01525 220605**
Kings Langley Office: 1 High Street, Kings Langley, Hertfordshire WD4 8AB **Tel: 01923 936900**
Associated London Office: 121 Park Lane, Mayfair, London W1K 7QG **Tel: 020 7079 1595**

www.castlestateagents.co.uk



Castles