



Castles

HALSEY DRIVE  
Gadebridge, Hemel Hempstead HP1 3SE



# HALSEY DRIVE

## Gadebridge, Hemel Hempstead HP1 3SE

**£425,000**  
(Freehold)



This delightful property boasts two spacious bedrooms, perfect for a small family or professionals seeking a peaceful retreat.

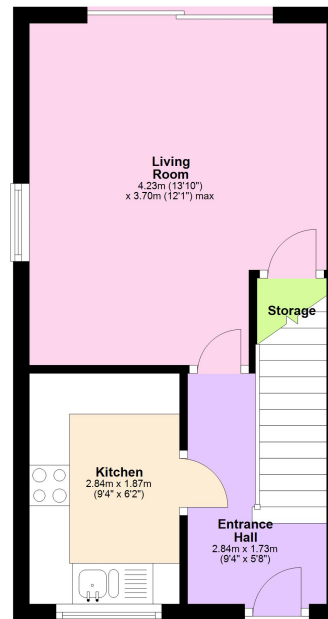
Step inside to discover a tastefully decorated interior that exudes a warm and inviting atmosphere. The open-plan living and dining area provides a comfortable space for relaxation and entertainment. The sleek and modern kitchen is equipped with high-quality appliances, making it a joy to prepare meals.

Outside, a private garden offers a tranquil space to enjoy the fresh air and soak up the sunshine. Resident parking is available, ensuring convenience for homeowners and guests alike.

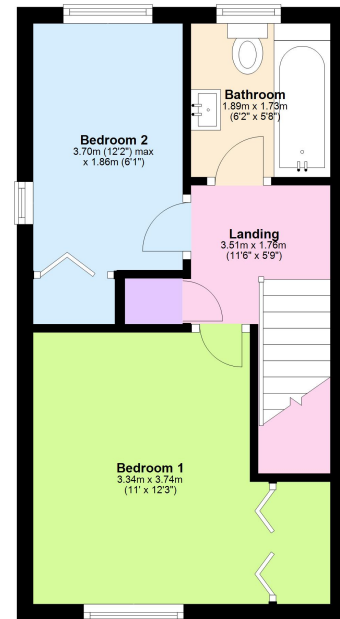
The village location provides a quiet and idyllic setting, with easy access to local amenities and excellent transport links. Nearby parks, shops, and schools make this property an ideal choice for families.

Tenure: Freehold  
Council Tax Band: D  
EPC Rating: D

**Ground Floor**  
Approx. 22.4 sq. metres (241.1 sq. feet)



**First Floor**  
Approx. 26.7 sq. metres (287.9 sq. feet)



Total area: approx. 49.1 sq. metres (529.0 sq. feet)

This floorplan is not to scale. It's for guidance only and accuracy is not guaranteed.  
Plan produced using PlanUp.

**Please Note:**

We have not tested any apparatus, fixtures, fittings or services. Interested parties must undertake their own investigation into the working order of these items.

All measurements are approximate and photographs provided are for guidance only.

**Berkhamsted Office:** 148 High Street, Berkhamsted, Hertfordshire HP4 3AT **Tel: 01442 865252**  
**Boxmoor Office:** 33 St John's Road, Hemel Hempstead, Hertfordshire HP1 1QQ **Tel: 01442 233345**  
**Eaton Bray Office:** 2a Wallace Drive, Eaton Bray, Dunstable LU6 2DF **Tel: 01525 220605**  
**Kings Langley Office:** 1 High Street, Kings Langley, Hertfordshire WD4 8AB **Tel: 01923 936900**  
**Associated London Office:** 121 Park Lane, Mayfair, London W1K 7QG **Tel: 020 7079 1595**

[www.castlestateagents.co.uk](http://www.castlestateagents.co.uk)



# Castles